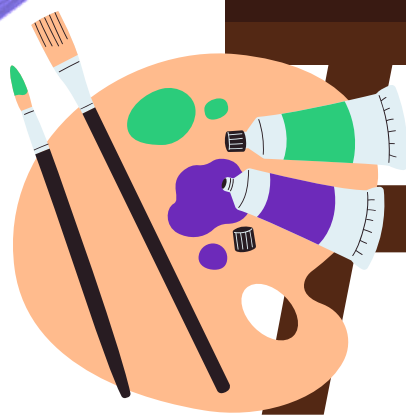
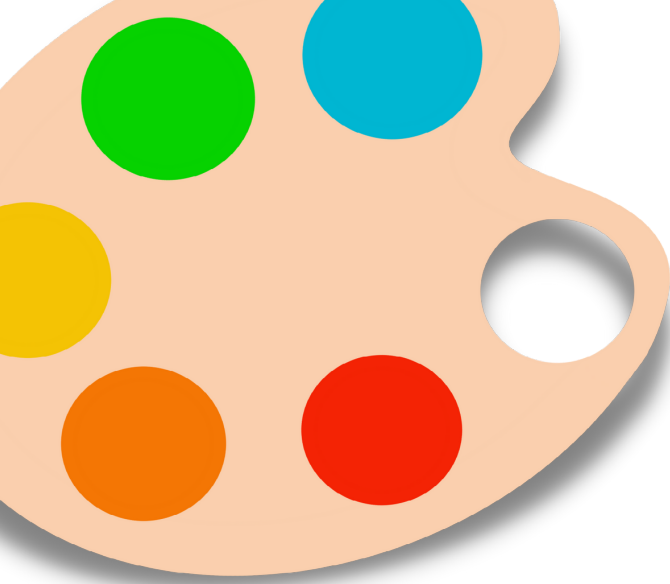


RAINBOW TRAIL

Suitable for ages
3-10 (and family!)

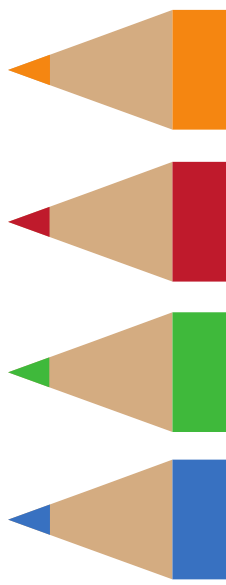
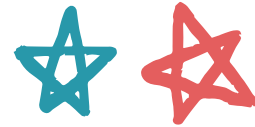
What you need:
- Coloured Pencils
- A grown-up



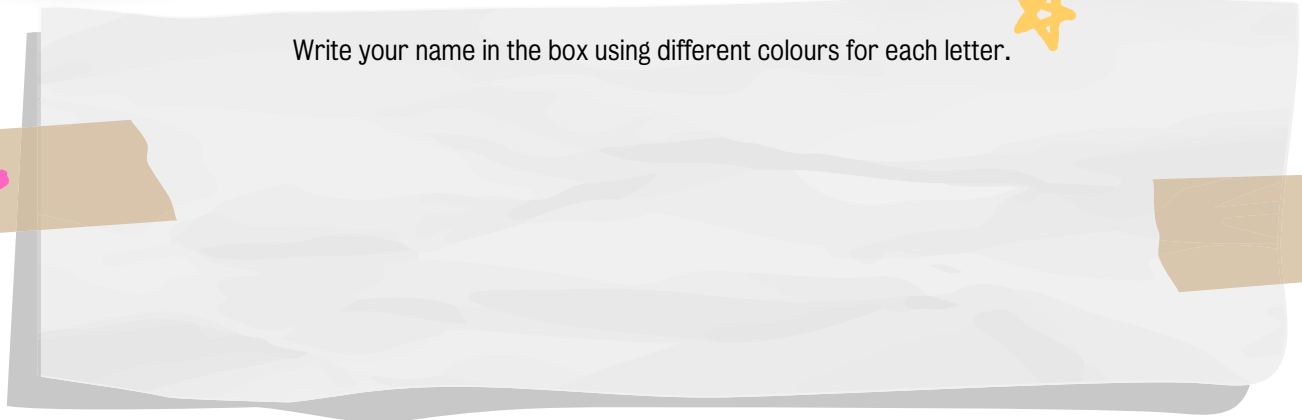


Victorian

Begin your journey in the Victorian times by finding Cousin Chatterbox's Alphabet from 1845!



Write your name in the box using different colours for each letter.

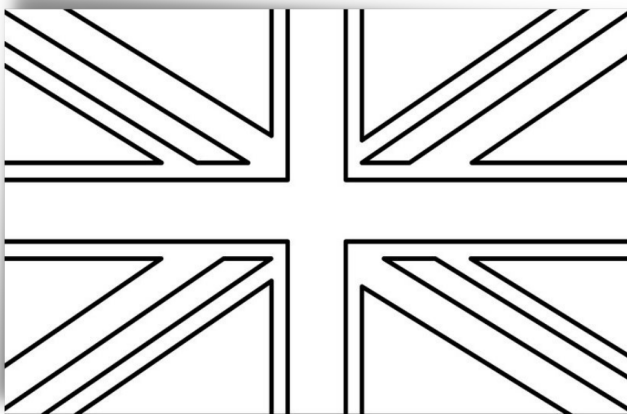


Edwardian



Do you like jigsaw puzzles? Help me solve this one!

What colour of hat and dress is this cat wearing in Raphael Tuck & Sons' jigsaw from the 1900s?



Colour in the flag of the United Kingdom with the Union Jack Colours.

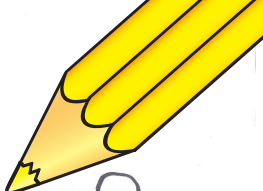
1910s

From the coronation of George V to the start of the Great War, the 1910s were filled with major events in Britain's history.

1920S

In the 1920s Colman's created an advertising campaign called The Mustard Club. Anyone who loved mustard could apply to join this fictional club, and members also got a badge

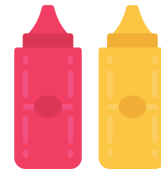
Colman's were known for their YELLOW packaging. Colour in the Colman's brand name with the colour YELLOW.



Colman's

Use the colour you found to colour me in!

Would you be in a mustard club or ketchup club?



1930S

Walt Disney first created Mickey Mouse in 1928, and his popularity grew throughout the 1930s.

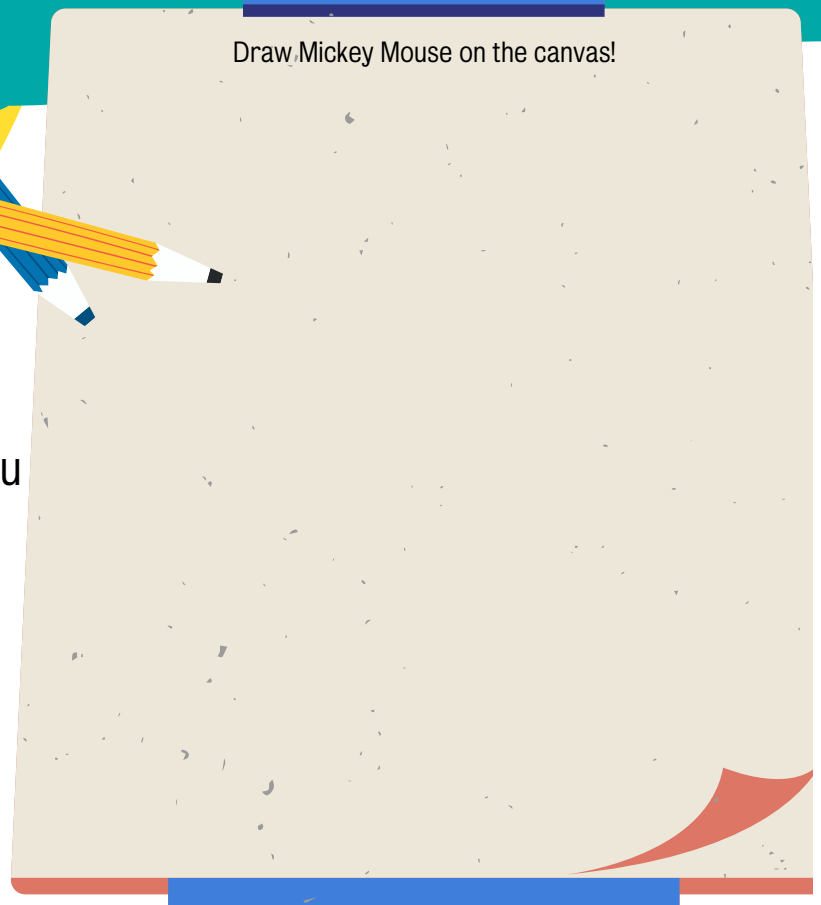
Draw Mickey Mouse on the canvas!

1940S

From eggs to milk to meat, many foods were sold in tin cans during World War II.

What are the three colours that you see on the Bird's Custard Powder Tin? Write them below:

- 1.
- 2.
- 3.



1950S

Do you see your favourite food in this supermarket from the 1950s?

What other items do you see?



- 1.
- 2.
- 3.

Find a brand of each colour in this shop



Write the brand next to the matching colour! Ask an adult to help :)

1960S

Dance like nobody's watching to the music of the 1960s British band: The Beatles! Ask your adult to sing you a Beatles' song

What colour is the guitar in the case?

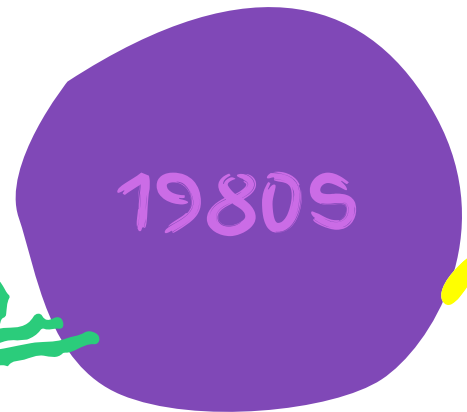
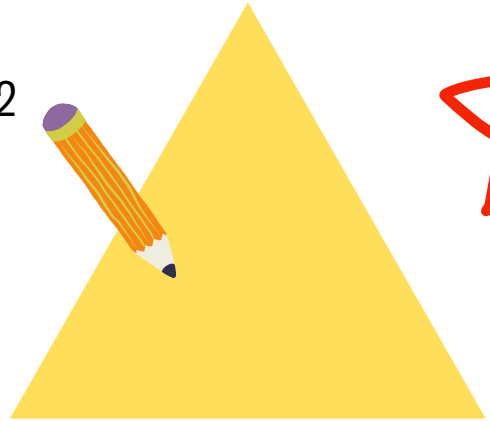
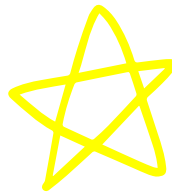


Fill in the guitar with the colour.

1970S

First released in 1977, there are now 12
Star Wars films!

What colour would your lightsaber be?
Colour it here!



Have you ever solved a
Rubik's cube? A popular
toy of the 1980s, the
cube has 6 sides and 6
colours.

What are the 6 colours of the Rubik's cube?

1.

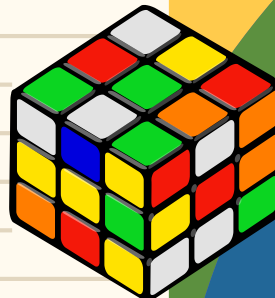
2.

3.

4.

5.

6.





1990S

Find some of your favourite cartoon characters on these Heinz pasta cans from the 1990s!

Draw your favourite character on this Heinz can!



Draw a minion here!

2000S

These **YELLOW** characters that you see are from the 2010 Universal Pictures film Despicable Me!



MUSEUM *of*
BRANDS

111-117 Lancaster Road
London, W11 1QT
Ladbroke Grove
+44 (0)20 7243 9611

Follow us:
f @museumofbrands
@museumofbrands

kusuma
trust



info@museumofbrands.com
www.museumofbrands.com

Registered Charity No: 1093538