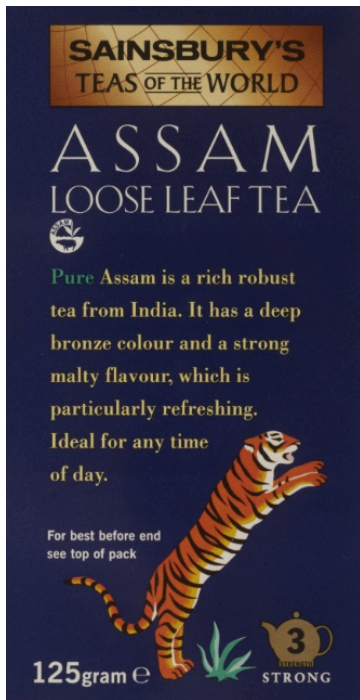


Activity: Tea Box Collage



Assam tea is made from a tea plant indigenous to the region of Assam and its rich soil. It is grown close to sea level and has a malty flavour and bright golden colour. As the area has high rainfall, the humid weather helps the tea's unique taste.

Teabags and loose leaf tea are often packaged in box made of a thick card. These boxes usually show the name of the tea and its flavour. They are also decorated with designs inspired by the place in which the tea is grown.

This activity will let you design a collage for your own Assam Tea Box with drawings of traditional South Asian patterns, items, landscapes and animals.

What you will need:

- Printer
- Scissors
- Glue
- Colouring pencils, pens or paint (optional)

How to:

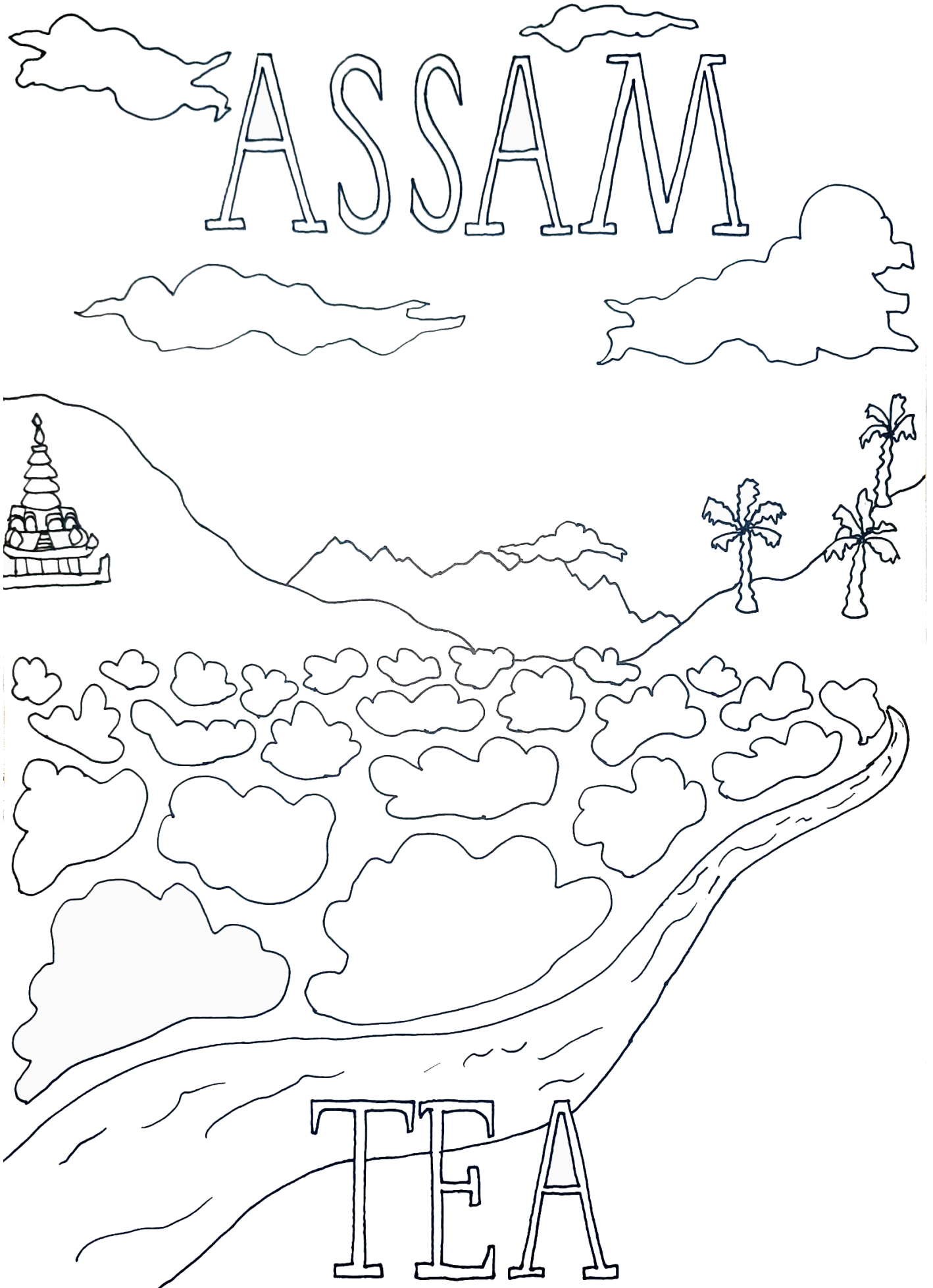
- Print one copy of the Tea Box template and one copy of the two Tea Box design sheets per person
- If you are feeling more creative, try printing the black & white versions of these and colour in both sheets with pencils, pens or acrylic paint
- Cut out all the drawings from your Tea Box design sheet
- Glue your drawings onto your Tea Box template to make a finished scene

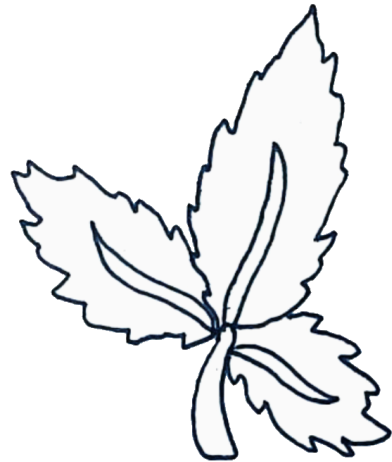
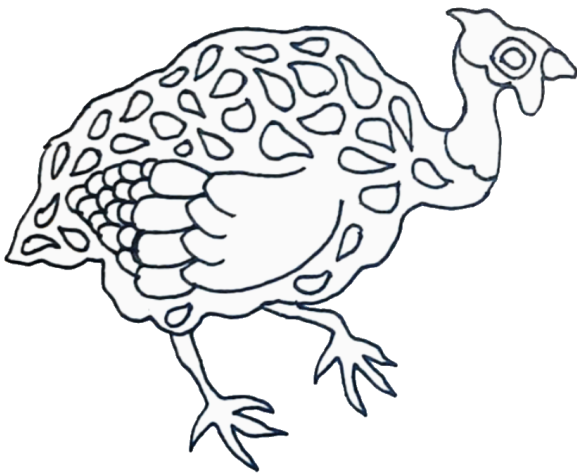
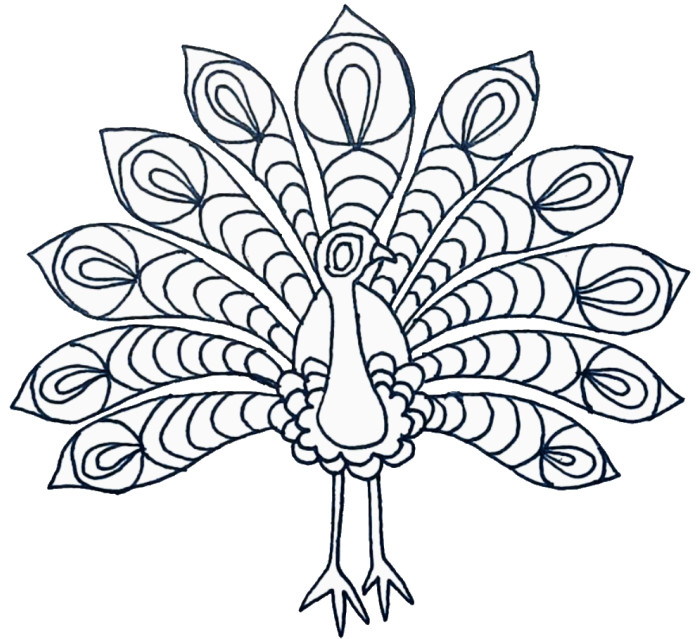
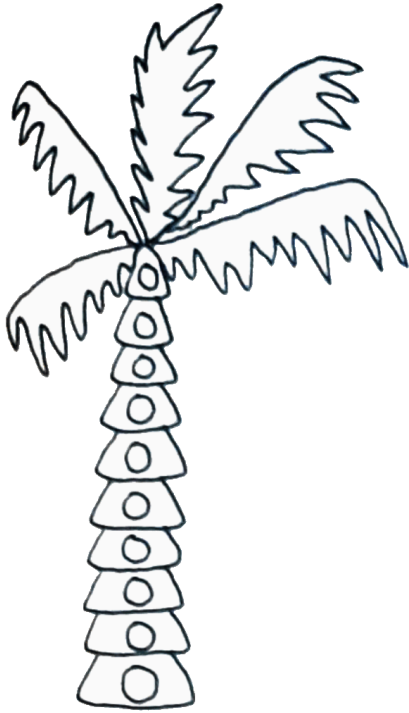
For an easier option, you can also Design Your Own Tea Advertisement with the final Activity Page!

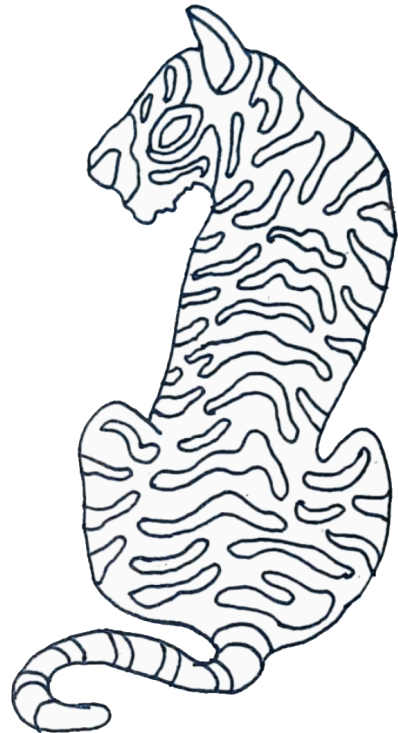
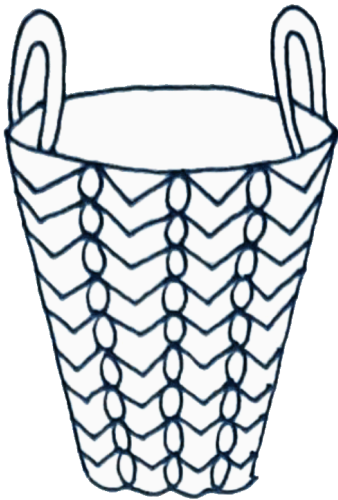
Prompting Questions:

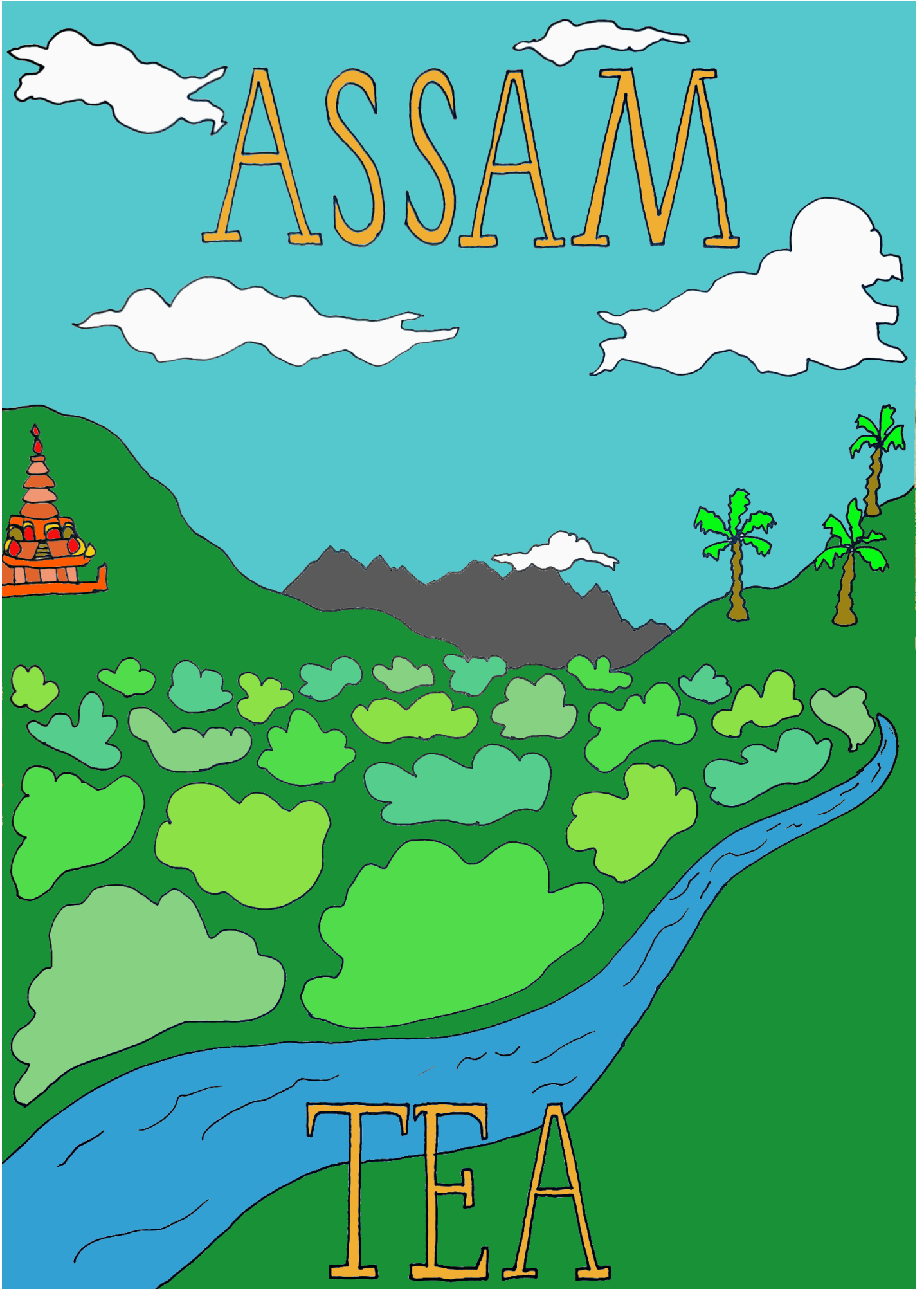
You might find these questions helpful for discussion during the activity:

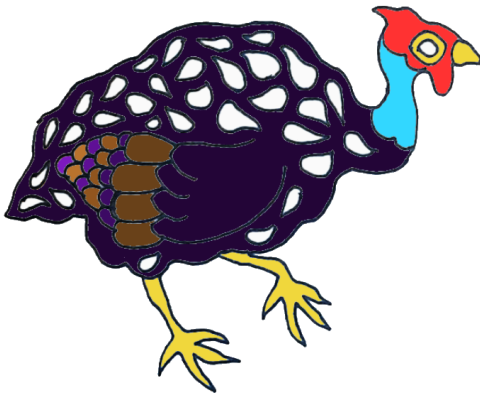
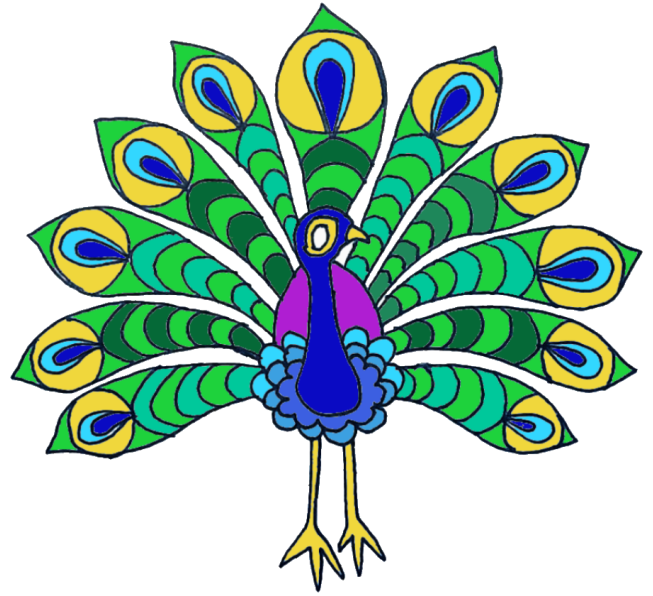
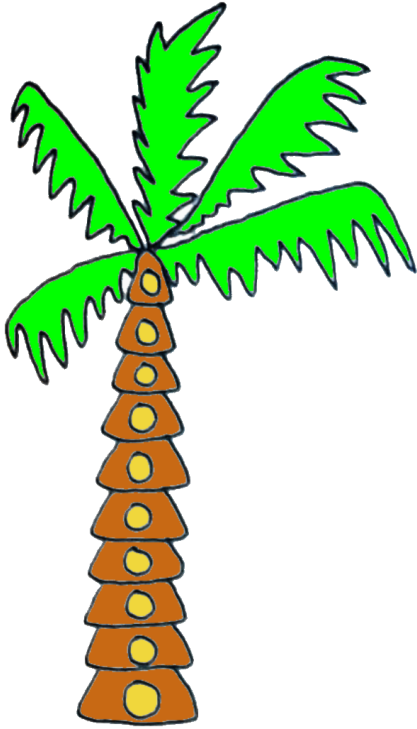
- How would you prepare tea?
- What is your favourite tea flavour?
- Do you recognise any of the animals as your national animal?
- Do the patterns and colours remind you of anything (e.g. clothing, celebrations, artwork, food or other products)

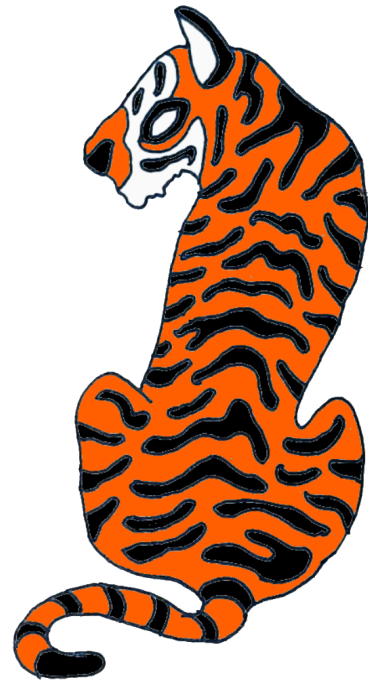
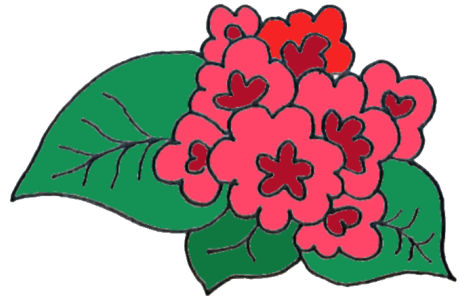














TEA



**MADE
IN:**



**TASTES
LIKE:**

